

**PK 12000 PERFORMANCE**

# THE PERFECT PARTNER FOR HANDLING BUILDING MATERIALS

**LIFETIME EXCELLENCE**



# LIFETIME EXCELLENCE

PALFINGER loader cranes are convincing due to their superior life-cycle performance. They are the most economical and also the most reliable over the entire product life. From solution finding to resale.

- **Better solutions**
- **Better efficiency**
- **Better ergonomics**
- **Higher availability**
- **More reliability**
- **Better ecology**
- **Higher serviceability**
- **Higher value retention**



# IT PROVES ITS RELIABILITY IN CONTINUOUS DUTY ON CONSTRUCTION SITES

When bricks or concrete parts have to be unloaded and placed precisely on the construction site – the PK 12000 Performance has the right credentials for the job. Easy maintenance, quality and reliability are the result of decades of research and development work by PALFINGER. This makes it your reliable partner.





# THOUGHTFULLY DESIGNED TECHNICAL DETAILS MAKE FOR EFFICIENT WORKING

## 6 Highlights



### High Speed Extension

For efficient assignments

The High Speed Extension speeds up the extension boom system. Crane works faster and more efficiently.



### Internally routed oil ducts

Maximum protection thanks to compact design

On the multiple extensions there are no hydraulic hoses between the cylinders. The internally routed oil passages make it possible to have a compact boom design.



### Extension system

Height compensation

The extension cylinders are guided in Jordal rails over rollers.



### Outrigger width

For optimum stability

The PK 12000 Performance fits to all normal truck chassis designs. Three outrigger widths are possible: 4.6 m (15' 1") mechanical, 5.6 m (18' 4") respectively 6.6 m (21' 8") hydraulic.



**Ergonomic crane control**

All Information at a glance

The operating levers for all crane functions are ergonomically arranged on the control console. This provides comfortable, efficient working. The control console is positioned so that it is easy to service.

**Central lubrication**

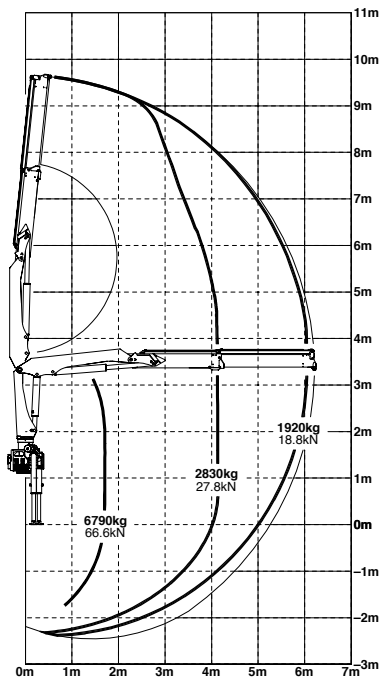
Optimised lubrication

For all bearings on the base frame.

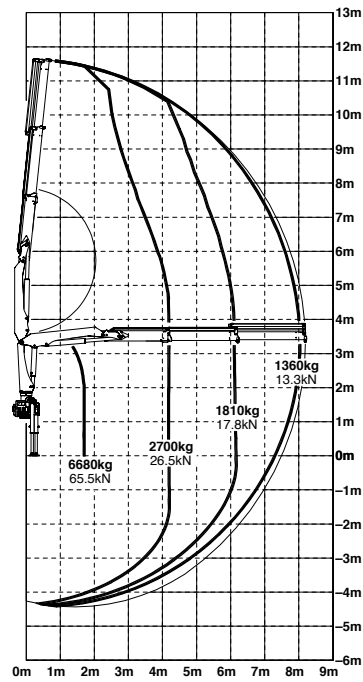
PK 12000

# PERFORMANCE

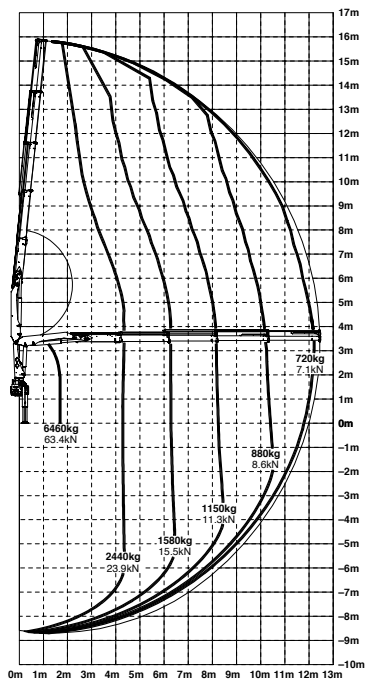
STD



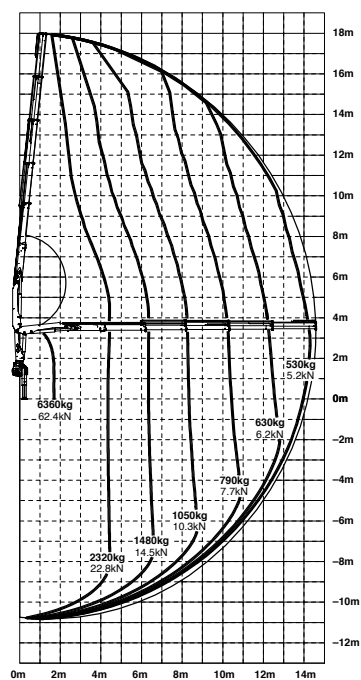
A



C



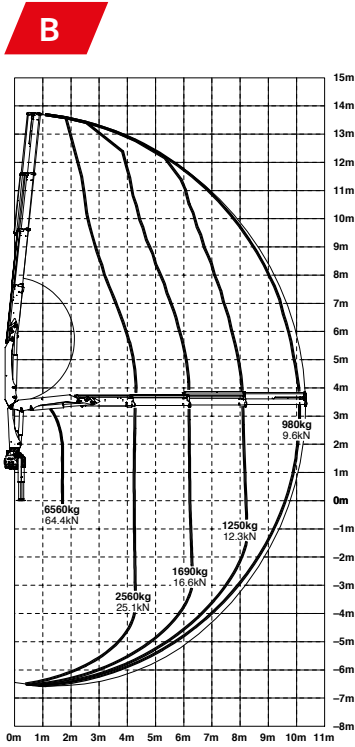
D



The reaches are indicated for a 20° main boom position and are therefore not the maximum ones.



## Lifting capacities



<b>max.</b>				<b>STD</b>
1.8 m	5' 11"	6790 kg	14970 lbs	
4.5 m	14' 9"	2590 kg	5710 lbs	
6.1 m	20' 0"	1910 kg	4210 lbs	

<b>max.</b>				<b>A</b>
1.8 m	5' 11"	6680 kg	14730 lbs	
4.5 m	14' 9"	2510 kg	5530 lbs	
6.1 m	20' 0"	1820 kg	4010 lbs	
8.1 m	26' 7"	1360 kg	3000 lbs	

<b>max.</b>				<b>B</b>
1.8 m	5' 11"	6560 kg	14460 lbs	
4.5 m	14' 9"	2420 kg	5340 lbs	
6.1 m	20' 0"	1720 kg	3790 lbs	
8.1 m	26' 7"	1260 kg	2780 lbs	
10.2 m	33' 6"	980 kg	2160 lbs	
12.3 m*	40' 4"	770 kg	1700 lbs	
14.3 m*	46' 11"	620 kg	1370 lbs	
16.4 m*	53' 10"	380 kg	840 lbs	

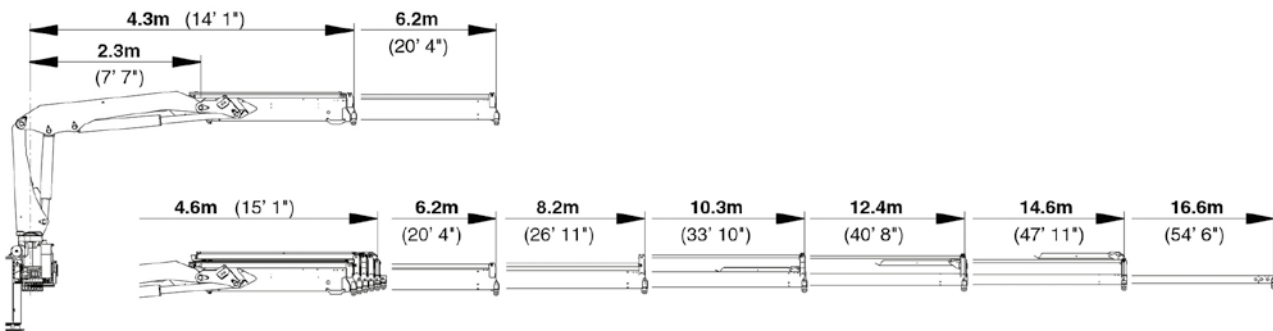
<b>max.</b>				<b>C</b>
1.8 m	5' 11"	6460 kg	12900 lbs	
4.5 m	14' 9"	2350 kg	6530 lbs	
6.1 m	20' 0"	1640 kg	4520 lbs	
8.1 m	26' 7"	1170 kg	3240 lbs	
10.2 m	33' 6"	890 kg	2450 lbs	
12.2 m	40' 0"	720 kg	2010 lbs	
14.2 m*	46' 7"	590 kg	1570 lbs	
16.3 m*	53' 6"	380 kg	1280 lbs	

<b>max.</b>				<b>D</b>
1.8 m	5' 11"	5750 kg	12680 lbs	
4.5 m	14' 9"	2860 kg	6310 lbs	
6.1 m	20' 0"	1940 kg	4280 lbs	
8.1 m	26' 7"	1350 kg	2980 lbs	
10.2 m	33' 6"	990 kg	2180 lbs	
12.2 m	40' 0"	780 kg	1720 lbs	
14.3 m	46' 11"	650 kg	1430 lbs	
16.4 m*	53' 10"	520 kg	1150 lbs	

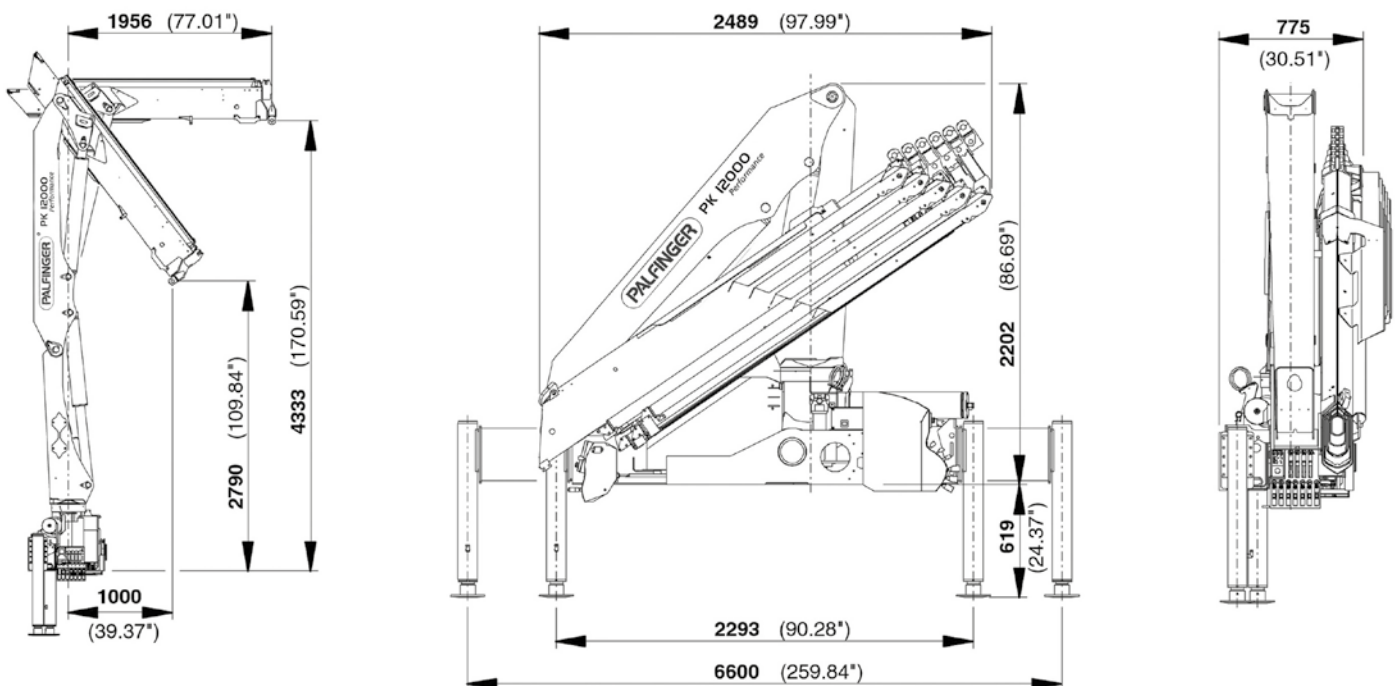
\*mechanical extension

# PERFECT DIMENSIONS

## EXTENSION BOOM VARIATIONS



## DIMENSIONS



## Technical specifications

EN 12999 H1-B3

### PK 12000

Max. lifting moment	11.6 mt/113.8 kNm	83900 ft.lbs
Max. lifting capacity	6790 kg/66.6 kN	14970 lbs
Max. hydraulic outreach	14.6 m	47' 11"
Max. manual outreach	16.6 m	54' 6"
Slewing angle	420 °	
Slewing torque	1.4 mt/13.7 kNm	10100 ft.lbs
Stabiliser spread (std./max.)	4.6 m / 6.6 m	15' 1" / 21' 8"
Fitting space required (std.)	0.78 m	2' 7"
Width folded	2.5 m	8' 2"
Max. operating pressure	300 bar	4350 psi
Recommended pump capacity	from 35 l/min to 50 l/min	9,2 US gal./min 13,2 US gal./min
Dead weight (std.)	1380 kg	3040 lbs

## Optional

- The PALFINGER radio remote control system with digital data transmission
- The PALTRONIC 50 electronic control system
- The hydraulic overload safety device
- Hose equipment for accessories

KP-PK12000M2+EN

Cranes shown in the leaflet are partially optional equipped and do not always correspond to the standard version. Country-specific regulations must be observed. Dimensions may vary. Subject to technical changes, errors and translation mistakes.